

TSLP Antibody (Internal)
Rabbit Polyclonal Antibody
Catalog # ALS12687**Specification**

TSLP Antibody (Internal) - Product Information

Application	WB, IHC-P, IF, E
Primary Accession	Q969D9
Reactivity	Human, Mouse
Host	Rabbit
Clonality	Polyclonal
Calculated MW	18kDa KDa
Dilution	WB~~1:1000 IHC-P~~N/A IF~~1:50~200 E~~N/A

TSLP Antibody (Internal) - Additional Information**Gene ID** 85480**Other Names**

Thymic stromal lymphopoietin, TSLP

Target/Specificity

19 amino acid peptide from near the center of human TSLP.

Reconstitution & Storage

Short term 4°C, long term aliquot and store at -20°C, avoid freeze thaw cycles. Store undiluted.

Precautions

TSLP Antibody (Internal) is for research use only and not for use in diagnostic or therapeutic procedures.

TSLP Antibody (Internal) - Protein Information**Name** TSLP**Function**

[Isoform 1]: Cytokine that induces the release of T-cell- attracting chemokines from monocytes and, in particular, enhances the maturation of CD11c(+) dendritic cells. Can induce allergic inflammation by directly activating mast cells.

Cellular Location

Secreted.

Tissue Location

Isoform 1 is expressed in a number of tissues including heart, liver and prostate. Isoform 2 is the

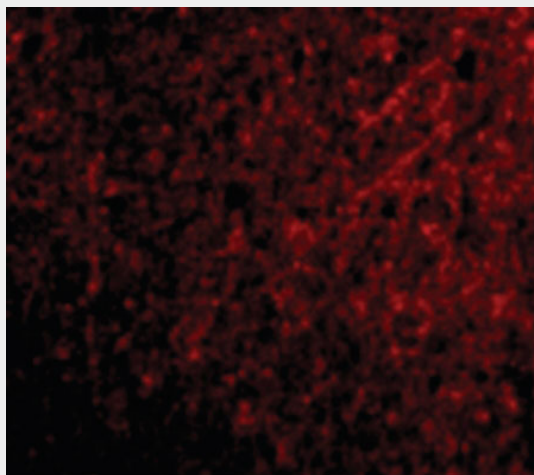
predominant form in keratinocytes of oral mucosa, skin and in salivary glands. It is secreted into saliva.

TSLP Antibody (Internal) - Protocols

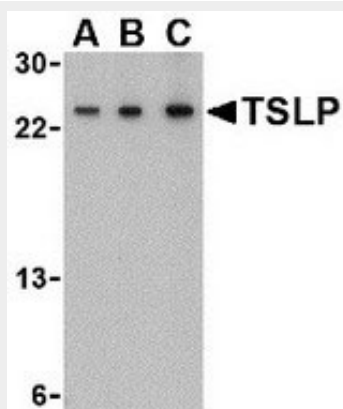
Provided below are standard protocols that you may find useful for product applications.

- [Western Blot](#)
- [Blocking Peptides](#)
- [Dot Blot](#)
- [Immunohistochemistry](#)
- [Immunofluorescence](#)
- [Immunoprecipitation](#)
- [Flow Cytometry](#)
- [Cell Culture](#)

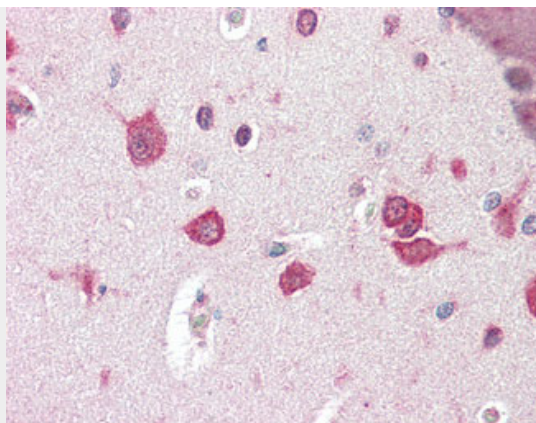
TSLP Antibody (Internal) - Images



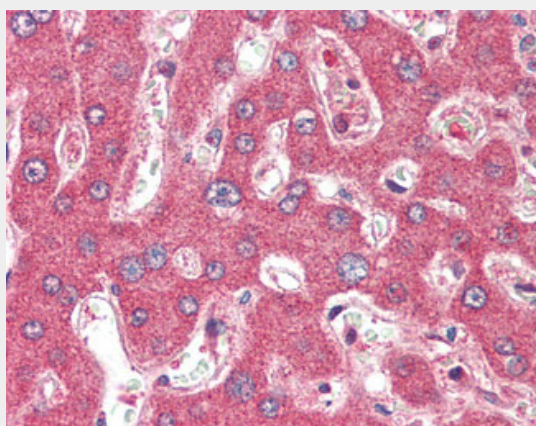
Immunofluorescence of TSLP in Human Brain cells with TSLP antibody at 20 ug/ml.



Western blot of TSLP in A-20 cell lysate with TSLP antibody at (A) 0.5, (B) 1 and (C) 2 ug/ml.



Anti-TSLP antibody IHC of human brain, cortex.



Anti-TSLP antibody IHC of human liver.

TSLP Antibody (Internal) - Background

Isoform 1: Cytokine that induces the release of T-cell- attracting chemokines from monocytes and, in particular, enhances the maturation of CD11c(+) dendritic cells. Can induce allergic inflammation by directly activating mast cells.

TSLP Antibody (Internal) - References

Reche P.A.,et al.J. Immunol. 167:336-343(2001).
Quentmeier H.,et al.Leukemia 15:1286-1292(2001).
Schmutz J.,et al.Nature 431:268-274(2004).
Mural R.J.,et al.Submitted (SEP-2005) to the EMBL/GenBank/DDBJ databases.
Allakhverdi Z.,et al.J. Exp. Med. 204:253-258(2007).